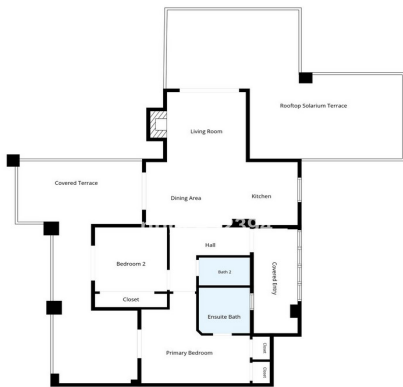




Penthouse for sale in Manilva, Manilva

419,900 €

Reference: R5422531 Bedrooms: 2 Bathrooms: 2 Build Size: 164m² Terrace: 1m²



Floor Plan Created By Cubicasa App. Measurements Deemed Highly Reliable But Not Guaranteed.





Costa del Sol, Manilva

Panoramic Sea View Scandinavian Penthouse | 76m² Solarium Terraces | 1 minute to Beach

Wake up to beautiful sea views and embrace the Mediterranean lifestyle from this beautifully renovated Scandinavian-inspired penthouse, where 76m² of wraparound terraces and private solarium create exceptional indoor-outdoor living. Just 250 metres from the beach (3-minute walk), this unique home enjoys one of the area's most convenient coastal locations. Whether enjoying breakfast in the morning sun, entertaining friends at sunset or simply unwinding while taking in the panoramic sea views, every terrace offers its own inviting outdoor space.

Within just 2 minutes of your front door, you'll find supermarkets, cafés, restaurants, pharmacies, shops and everyday amenities, while the popular Romeo Beach Restaurant, La Plage Casanis, beach clubs and the beachfront promenade are all just a short stroll away. Inside, the apartment has been thoughtfully renovated in a bright Scandinavian style, featuring a light-filled open-plan living and dining area, a contemporary fully equipped kitchen, spacious bedroom, elegant bathroom and seamless access to the surrounding terraces, creating a natural extension of the interior living space.

The expansive wraparound terraces are undoubtedly the home's standout feature, providing generous space for outdoor dining, sunbathing, lounging and entertaining while enjoying panoramic sea views and the Costa del Sol's year-round sunshine.

Residents enjoy beautifully landscaped tropical gardens, a large resort-style swimming pool and private parking within a well-maintained community just moments from the sea. Whether you're taking an early morning walk along the beach, enjoying lunch at Romeo Beach Restaurant, relaxing at La Plage Casanis, or watching the sunset from your own panoramic terraces, this exceptional penthouse perfectly combines Scandinavian design, an unbeatable walk-to-everything location and the relaxed luxury of Costa del Sol living.

Some images have been professionally staged to illustrate the lifestyle and design potential of the property.



Features:

Features

Covered Terrace
Lift
Near Transport
Private Terrace
Ensuite Bathroom
Marble Flooring
Fitted Wardrobes
Barbeque
WiFi
Near Church
Solarium
Domotics
Access for people with reduced mobility
Near Mosque

Views

Sea
Mountain
Panoramic
Country
Garden
Pool
Forest

Pool

Communal

Garden

Communal
Landscaped
Easy Maintenance

Utilities

Electricity
Drinkable Water
Telephone

Orientation

South
West
South East
South West

Setting

Commercial Area
Urbanisation
Close To Shops
Close To Town
Close To Schools
Village
Town
Suburban
Close To Forest
Country

Furniture

Fully Furnished
Optional

Security

Gated Complex
Electric Blinds
Entry Phone

Category

Holiday Homes
Investment
Resale
Bargain
Beachfront
Luxury
Contemporary
Cheap

Climate Control

Air Conditioning
Cold A/C
Hot A/C

Condition

Good
Excellent
Recently Refurbished
Recently Renovated

Kitchen

Fully Fitted
Kitchen-Lounge

Parking

Underground
Garage
Private
Communal