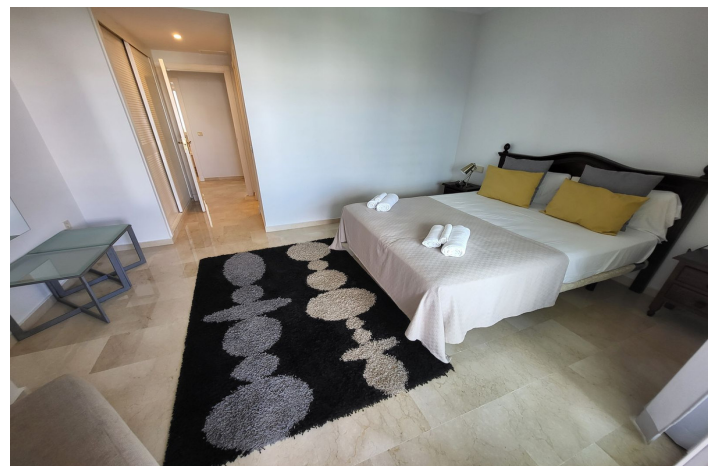




Penthouse Duplex for sale in Puerto Banús, Marbella

1,050,000 €

Reference: R4791541 Bedrooms: 4 Bathrooms: 4 Build Size: 110m² Terrace: 90m²





Costa del Sol, Puerto Banús

Incredible opportunity to acquire this duplex penthouse with 4 bedrooms and 4 bathrooms in one of the best developments in Puerto Banus.

The property is distributed over two floors, on the main floor we find an entrance hall, a spacious living room with direct access to a nice terrace overlooking the communal gardens, a fully equipped kitchen with drying area and 2 large bedrooms with 2 bathrooms.

On the upper floor there are two double bedrooms with en-suite bathrooms. From the master bedroom there is access to a huge L-shaped terrace with fantastic views of the urbanisation, swimming pools, mountains and even the sea.

The urbanisation is situated in the heart of the famous Puerto Banus. A few meters from the marina of Puerto Banus where you can find restaurants, fashion shops, yachts and luxury cars and a large influx of international tourists. Next to all services such as El Corte Ingles. And surrounded by numerous golf courses.

The urbanisation is gated and has a concierge and 24 hour security. Spacious gardens where you can relax and sunbathe in peace and quiet. Swimming in one of the 4 swimming pools, playing paddle tennis or simply relaxing. For added security there are surveillance cameras.

Located in a privileged area, you will enjoy the proximity to beaches, restaurants and local shops. Marbella is famous for its warm climate and rich culture, making it a perfect place to live or holiday, so don't miss the opportunity to visit this wonderful flat and make it your new home!



Features:

Features

Covered Terrace
Lift
Near Transport
Private Terrace
Ensuite Bathroom
Marble Flooring
Double Glazing
24 Hour Reception
Fitted Wardrobes
Utility Room
Solarium
Paddle Tennis

Views

Garden
Pool

Pool

Communal

Garden

Communal

Category

Reduced
Holiday Homes
Investment
Bargain
Beachfront
Luxury

Orientation

North

Setting

Commercial Area
Beachside
Close To Port
Urbanisation
Close To Sea
Close To Shops
Close To Schools
Town
Close To Marina

Furniture

Not Furnished

Security

Gated Complex
24 Hour Security

Climate Control

Air Conditioning
Cold A/C
Hot A/C

Condition

Good

Kitchen

Fully Fitted

Parking

Garage