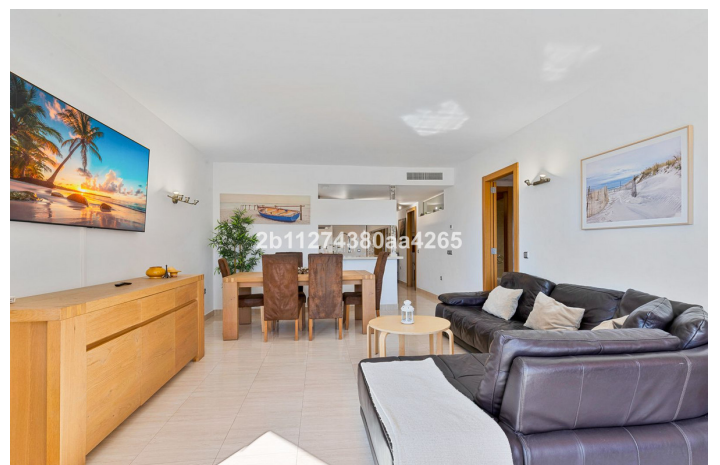




Ground Floor Apartment for sale in Benalmádena, Benalmádena

475,000 €

Reference: R5396680 Bedrooms: 2 Bathrooms: 2 Build Size: 87m² Terrace: 10m²





Costa del Sol, Benalmádena

Magnificent ground floor apartment located in the prestigious and secure gated community of La Reserva del Higuerón, one of the most prestigious and high-standing locations near Fuengirola

With direct access to the highway, 24h security, and all essential services at your doorstep—supermarkets, cafés, restaurants, and more—this is a lifestyle opportunity you don't want to miss.

This beautiful ground floor apartment is nestled in the residential complex of Altos del Higueron offering amenities such as communal swimming pools, green areas and 24-hour security. The property boasts a built area of 92 m² and with its south orientation enjoys plenty of natural light throughout the day and an amazing panoramic sea view.

The interior features two bedrooms with fitted wardrobes, the master is en-suite, a second full bathroom with shower, a fully fitted kitchen connected to a large living-dining area with direct access to a spacious private covered terrace of 17 m² with Lumon-style glass curtains, offering panoramic sea views and direct access to beautifully maintained communal gardens and swimming pool.

The property comes with a double private box garage of 27 m² for your convenience.

Here are some key features:

- Porcelain flooring, double-glazed Climalit windows, electric shutters in both bedrooms, new central A/C, new hot water tank.
- tourist license
- sold fully furnished
- Access to Higuerón's 5-star sports club, spa, and hotel
- Walking distance to cafés, restaurants, and supermarkets
- Only 15 minutes to Málaga Airport, 25 minutes to Marbella, and 5 minutes to the beach with shuttle service every 30 minutes

This apartment is ideal as a permanent residence, holiday home, or investment in one of the most sought-after areas of the Costa del Sol.

Viewings highly recommended.



Features:

Features

Covered Terrace
Lift
Near Transport
Private Terrace
Marble Flooring
Double Glazing
Fitted Wardrobes
WiFi

Views

Garden
Pool

Pool

Communal

Garden

Communal

Category

Holiday Homes

Orientation

South
South West

Setting

Close To Golf
Close To Sea
Close To Shops
Close To Town
Marina

Furniture

Fully Furnished

Security

24 Hour Security
Electric Blinds

Climate Control

Cold A/C
Hot A/C
Central Heating

Condition

Excellent

Kitchen

Fully Fitted

Parking

Underground
Garage
Private
Covered