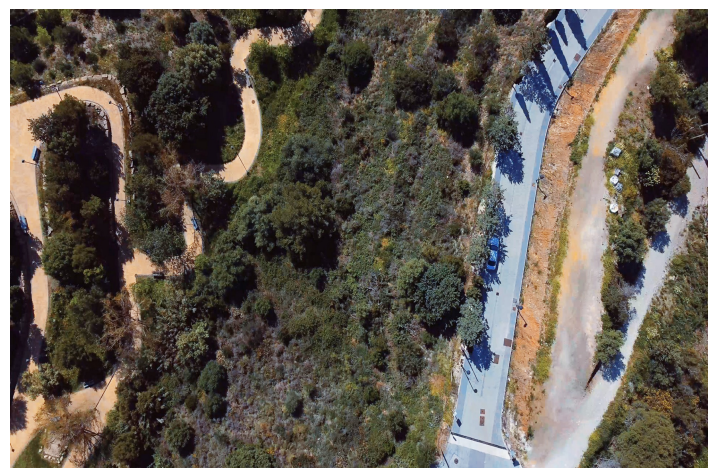




## Residential Plot for sale in La Capellania, Benalmádena

720,000 €

Reference: HUTEBEN027J Plot Size: 1,991m<sup>2</sup>





## Costa del Sol, La Capellania

UNIQUE INVESTMENT OPPORTUNITY in Benalmádena Costa. URBAN LAND

SITUATED in La Capellanía next to Reserva del Higuero. Totally surrounded by urbanised green areas.

SEA VIEWS. Plot 400 metres from the beach of Carvajal.

TO BUILD 1, 2 or 3 VILLAS.

Land classified as type U1 single-family, several options to build, all of them with large gardens, swimming pools, terraces and independent garages.

### URBAN DATA

Surface area: 1991 m<sup>2</sup>

Occupation: 25% 497m<sup>2</sup>

Buildable area: 0,38 756m<sup>2</sup>

Minimum plot to segregate: 600m<sup>2</sup>

CONTACT us without obligation to visit the property and obtain the technical and economic report of the investment. We provide FREE advice from our team of architects who will inform you of the different options to get the most out of the property.

### ABOUT BENALMADENA

Located on the Costa del Sol, Benalmadena is one of the most attractive areas for property investment in Spain, thanks to its growing tourist and residential demand.

With an excellent climate, quality beaches and a modern infrastructure, the town offers a high quality of life surrounded by the best services. The marina and the popular Paloma Park reinforce its attractiveness, while the development of new housing and tourist projects increases its long-term value. Benalmádena is an excellent option for investors looking to diversify their portfolio in an established and expanding destination.

(\*) Real estate fees included in the sale price. Not included expenses inherent to the purchase such as ITP, AJD, notary, registry, etc.



## Features:

### Features

DirectSeaAccess

Beachside

TransportNear

CountryView

CloseToChildrenPlayground

AmenitiesNear

StreetView

### Views

Sea

Mountain

Panoramic

Garden

### Setting

Close To Golf

Close To Port

Close To Sea

Close To Shops

Close To Schools