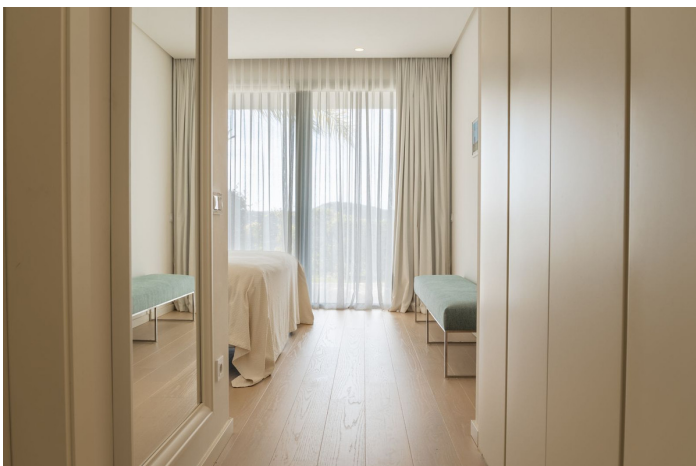




Duplex for sale in Benahavís, Benahavís

995,000 €

Reference: R5354083 Bedrooms: 3 Bathrooms: 3 Plot Size: 57m² Build Size: 240m² Terrace: 36m²





Costa del Sol, Benahavís

Spacious Duplex Apartment with Large Terrace and Private Outdoor Space in Benahavís

Discover this exceptionally spacious duplex apartment located in the green and quiet Benahavís. This home combines modern architecture with generous living spaces and impressive outdoor areas, ideal for those who love comfort, privacy, and the Mediterranean outdoor lifestyle.

The home is spread over two levels, ensuring a pleasant separation between the living and sleeping areas.

Refined Interior & Comfort

Upon entering, you are welcomed into a bright living space with an open layout. The living room and dining area connect seamlessly to the terraces, allowing the indoors and outdoors to flow perfectly into one another.

Three Spacious Bedrooms:

The master bedroom features an en-suite bathroom and direct access to the outdoors. The other bedrooms are spacious and ideal for guests or family.

Modern Open Kitchen:

Fully integrated into the living space, with a sleek design and a direct connection to the dining and seating area.

The Ultimate Outdoor Living

The outdoor spaces are one of the greatest assets of this property. Large Main Terrace:

Perfect for dining, relaxing, and enjoying the view.

Additional Outdoor Space / Garden Zone:

The duplex layout offers additional outdoor space, ideal for a lounge, play area, or extra privacy.

Features

Location: Benahavís (quiet, green, and exclusive area)

Layout:

3 bedrooms

3 bathrooms

Duplex (2 levels)

Spacious open living area



Surfaces:

Interior space: 132.89 m²

Terrace: 35.56 m²

Garden: 57.20 m²

Additional space: 31.60 m²

Extras:

Includes garage and storage

Plenty of privacy

Panoramic view

Price:

€995,000 (excl. furniture)



Features:

Features

Covered Terrace
Private Terrace
Double Glazing
Gym

Views

Sea
Mountain

Pool

Communal

Garden

Private

Utilities

Drinkable Water

Orientation

South East

Setting

Urbanisation

Furniture

Fully Furnished

Security

Gated Complex
24 Hour Security

Climate Control

Air Conditioning
Central Heating

Condition

Good

Kitchen

Fully Fitted

Parking

Underground