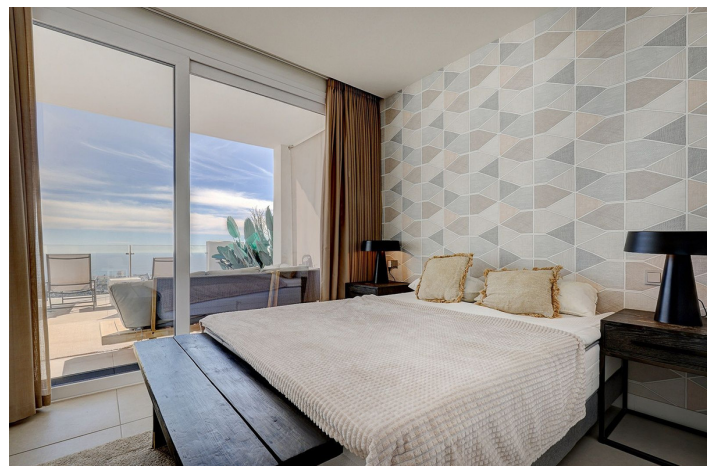




## Penthouse Duplex for sale in Benalmádena, Benalmádena

680,000 €

Reference: R5379907 Bedrooms: 3 Bathrooms: 2 Build Size: 105m<sup>2</sup> Terrace: 82m<sup>2</sup>





## Costa del Sol, Benalmádena

Modern Duplex Penthouse with Panoramic Sea Views in Benalmádena

This elegant duplex penthouse enjoys stunning panoramic sea views and a prime location in Benalmádena, just a short drive from the beach and the picturesque village of Benalmádena Pueblo.

The main floor features a bright open-plan living area with a fully equipped kitchen and breakfast bar, leading out to a spacious terrace ideal for dining and relaxing. Two bedrooms are located on this level, one with direct terrace access, along with a convenient laundry room.

On the upper level there is the main bedroom with an en-suite bathroom and access to a spectacular rooftop terrace with a private jacuzzi and breathtaking views of the Mediterranean.

Finished to a high standard, the property offers ceramic tile flooring throughout, hot and cold air conditioning, underfloor heating, smoke detectors, an alarm system, and built-in wardrobes in all bedrooms.

Set within a secure and beautifully maintained complex, residents enjoy excellent communal facilities including a large swimming pool, gym, paddle tennis courts, jacuzzi, whirlpool, sauna, cinema room, and a children's play area.

The property includes two underground parking spaces and a storage room. Perfectly located close to Benalmádena Pueblo's restaurants, cafés, and amenities, and only a short drive from the coast. Málaga Airport is just 15 minutes away, making this an ideal holiday home, second residence, or investment opportunity with strong rental potential.

The neighbouring penthouse is also available for €680,000. Both can be purchased together at a discounted combined price.



## Features:

### Features

Covered Terrace  
Lift  
Near Transport  
Private Terrace  
Storage Room  
Ensuite Bathroom  
Double Glazing  
Fitted Wardrobes  
Utility Room  
WiFi  
Gym  
Jacuzzi  
Solarium  
Paddle Tennis

### Views

Sea  
Mountain  
Panoramic

### Pool

Communal  
Indoor

### Garden

Communal  
Landscaped  
Easy Maintenance

### Utilities

Electricity

### Orientation

South  
South East

### Setting

Close To Golf  
Urbanisation  
Close To Sea  
Close To Shops  
Close To Town  
Close To Schools

### Furniture

Fully Furnished

### Security

Gated Complex  
Alarm System  
Entry Phone

### Category

Holiday Homes  
Investment  
Resale  
Contemporary

### Climate Control

Air Conditioning  
Cold A/C  
Hot A/C  
U/F Heating  
U/F/H Bathrooms

### Condition

Good  
Excellent

### Kitchen

Fully Fitted

### Parking

Underground  
More Than One

### CO2 Emission Rating

E

### Energy Rating

E