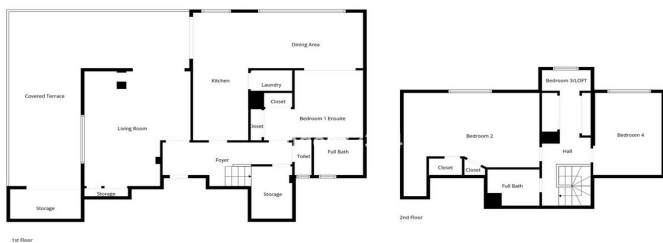




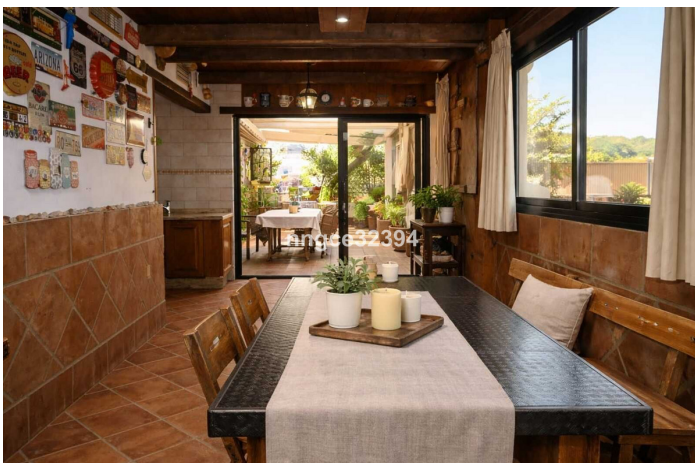
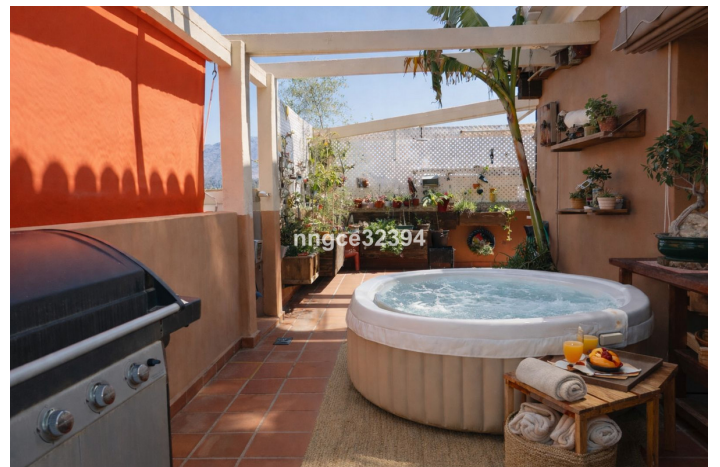
Penthouse Duplex for sale in San Pedro de Alcántara, Marbella

599,000 €

Reference: R5314504 Bedrooms: 4 Bathrooms: 3 Build Size: 245m²



Floor Plan Created By Cubicasa App. Measurements Deemed Highly Reliable But Not Guaranteed.





Costa del Sol, San Pedro de Alcántara

Spacious Duplex Penthouse with Private Plunge Pool/Jacuzzi, 44 m² Wraparound Terrace and La Concha Views in San Pedro

This charming 225 m² duplex penthouse is located in a secure residential building within a charming village-like setting in San Pedro de Alcántara, offering generous living space, authentic rustic character, and stunning open views of La Concha from both floors. Despite its peaceful setting, the property is very centrally located, within walking distance to cafés, shops, Mercadona, and popular spots such as Tejeringos Coffee Shop. San Pedro Playa is approximately 3.5 km away.

A standout feature is the 44 m² wraparound penthouse terrace, where the owners enjoy a private plunge pool/jacuzzi with stunning views towards La Concha mountain. This inviting outdoor space also offers plenty of room for al fresco dining, relaxing, entertaining, and includes an outdoor shower, barbecue area, and lounge space.

The property features four bedrooms (one currently arranged as a walk-in closet) and three bathrooms, along with ample storage throughout. Its warm rustic style creates an inviting atmosphere, while the spacious layout provides flexibility for families, guests, or working from home.

In addition, there is a very large oversized private garage beneath the building, ideal for secure parking and extra storage.

The property is also conveniently located near the Supera Centre, popular with San Pedro residents, offering extensive sports facilities including indoor and outdoor swimming pools, gym, fitness classes, and wellness amenities.

A rare combination of space, outdoor living, views, and central location—perfect as a family home, second residence, or investment in the incredible and fast-growing area of San Pedro.



Features:

Features

Covered Terrace
Lift
Near Transport
Private Terrace
Storage Room
Ensuite Bathroom
Marble Flooring
Double Glazing
Fitted Wardrobes
Utility Room
Barbeque
WiFi
Fiber Optic
Near Church
Jacuzzi
Solarium
Guest Apartment
Staff Accommodation
Games Room
Restaurant On Site
Access for people with reduced mobility
Bar
Day Care
Near Mosque

Views

Mountain
Panoramic
Country
Urban

Pool

Heated
Room for Pool
Private

Garden

Private

Orientation

North

Setting

Commercial Area
Close To Golf
Close To Port
Urbanisation
Close To Sea
Close To Shops
Close To Town
Close To Schools
Village
Town
Close To Marina
Suburban

Furniture

Fully Furnished
Not Furnished
Optional
Part Furnished

Security

Gated Complex

Climate Control

Air Conditioning
Cold A/C
Hot A/C
Fireplace

Condition

Good
Excellent

Kitchen

Fully Fitted

Parking

Underground



Utilities

Electricity

Telephone

24 Hour Security

Alarm System

Electric Blinds

Entry Phone

Category

Holiday Homes

Investment

Resale

Bargain

Garage

Private

More Than One

Communal

Covered