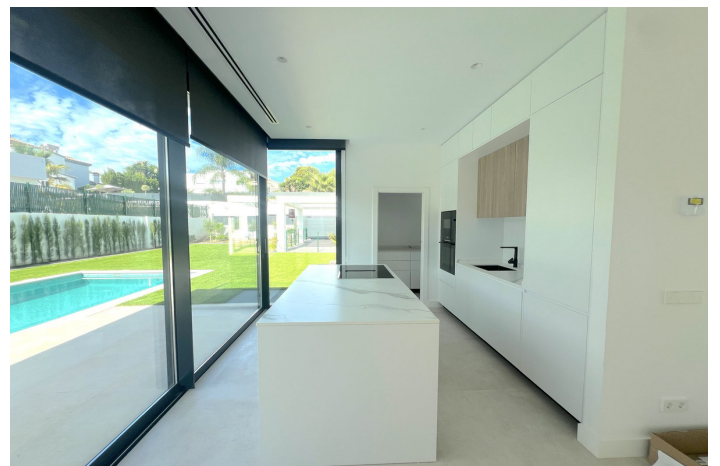




Detached Villa for sale in Atalaya, Estepona

2,000,000 €

Reference: R5172730 Bedrooms: 5 Bathrooms: 6 Plot Size: 645m² Build Size: 302m² Terrace: 85m²





Costa del Sol, Atalaya

Discover the epitome of luxury living with this brand new villa situated in the prestigious Montebiarritz Atalaya. Ideally located just 10 minutes from the vibrant Puerto Banus and in close proximity to top private schools and essential amenities, this property offers both convenience and elegance.

Property Features:

- ***Ground Floor***: Experience an open and airy living space where the integrated kitchen seamlessly flows into the dining and living areas. This inviting space grants direct access to a charming porch and a stunning pool. Additionally, you will find a well-appointed bedroom complete with an en-suite bathroom, along with a convenient guest toilet.

- ***Second Floor***: This level is dedicated to ultimate comfort, featuring a luxurious master bedroom that boasts its own private pool and a spacious walk-in closet. An additional bedroom with an en-suite bathroom ensures ample accommodation for family or guests.

- ***Underground Level***: Embrace entertainment and relaxation in this expansive area, which includes two bedrooms, each with their own en-suite bathrooms. Enjoy quality time in the second living room, unwind in the cinema room, rejuvenate in the spa, or manage household tasks effortlessly in the laundry room.

This exquisite villa harmoniously blends modern design with functional living spaces, making it the perfect sanctuary for those seeking a refined lifestyle in a sought-after location.



Features:

Features

Covered Terrace
 Private Terrace
 Storage Room
 Ensuite Bathroom
 Double Glazing
 Fitted Wardrobes
 Utility Room
 Barbeque
 Solarium
 Guest Apartment
 Basement
 Staff Accommodation
 Domotics
 Access for people with reduced mobility

Orientation

South

Climate Control

Air Conditioning
 Cold A/C
 Hot A/C
 U/F Heating
 U/F/H Bathrooms
 Central Heating

Views

Mountain
 Garden
 Forest

Setting

Close To Golf
 Urbanisation
 Close To Shops
 Close To Town
 Close To Schools
 Mountain Pueblo
 Close To Forest

Condition

New Construction

Pool

Private

Garden

Private
 Easy Maintenance

Furniture

Not Furnished

Security

Alarm System
 Electric Blinds
 Entry Phone
 Safe

Kitchen

Fully Fitted

Parking

Covered

Utilities

Electricity
 Drinkable Water
 Photovoltaic solar panels
 Telephone

Category

Holiday Homes
 Investment
 Resale
 Luxury
 Contemporary