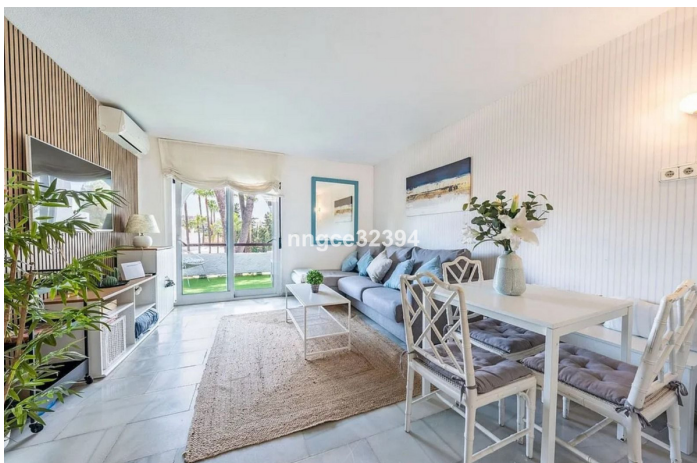
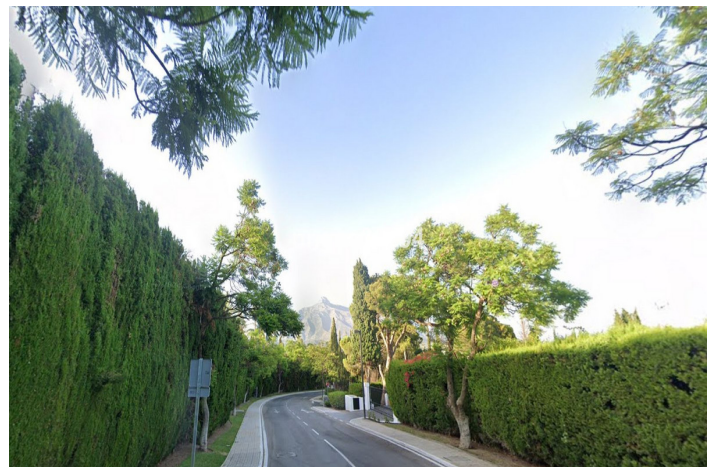
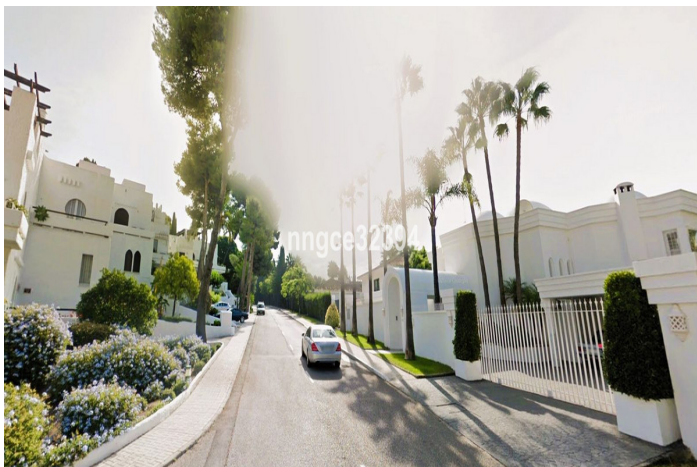




Middle Floor Apartment for sale in Puerto Banús, Marbella

319,900 €

Reference: R4929040 Bedrooms: 1 Bathrooms: 1 Build Size: 70m² Terrace: 20m²





Costa del Sol, Puerto Banús

RESERVED Nestled in the master community of Atalaya de Rio Verde, surrounded by lavish mansions is where you will find this little gem of potential, where neighboring units are selling up to 1.2 million. Just 1 kilometre from the iconic Puerto Banús, this two-level duplex apartment offers an incredible opportunity to create your dream home or make a high-return investment in a charming Andalusian-style community. With bright, spacious interiors, two terraces, and serene garden views, this property promises the perfect combination of peace and convenience.

The potential here is limitless. The apartment is currently a one-bedroom layout, but with the possibility to expand by adding a 50-60m² basement, you can increase the living space to 130m² and easily transform it into two or even three bedrooms. Whether you're looking to design a bespoke living space or capitalize on the growing rental market, this is a rare and exciting find.

The community itself is a tranquil oasis, featuring beautifully landscaped gardens and communal pools, all just moments away from Puerto Banús and its world-class amenities (located near La Dame de Noche) Whether for personal use or as an investment project, this property offers exceptional potential at an attractive price point.



Features:

Features

Covered Terrace
Near Transport
Private Terrace
Satellite TV
Storage Room
Ensuite Bathroom
Marble Flooring
Double Glazing
Fitted Wardrobes
Utility Room
WiFi
Fiber Optic
Near Church
Basement
Near Mosque

Views

Mountain
Panoramic
Country
Garden
Urban
Street
Courtyard

Pool

Communal

Garden

Communal
Landscaped
Easy Maintenance

Utilities

Electricity
Drinkable Water
Telephone

Orientation

North
South
South East

Setting

Close To Port
Urbanisation
Close To Sea
Close To Shops
Close To Town
Close To Schools
Town
Close To Marina
Suburban
Close To Forest

Furniture

Fully Furnished
Optional

Security

Gated Complex
Electric Blinds
Entry Phone

Category

Reduced
Holiday Homes
Investment
Resale
Bargain
Contemporary
Cheap
Off Plan

Climate Control

Air Conditioning
Cold A/C
Hot A/C

Condition

Good
Excellent
Recently Refurbished

Kitchen

Fully Fitted

Parking

Communal