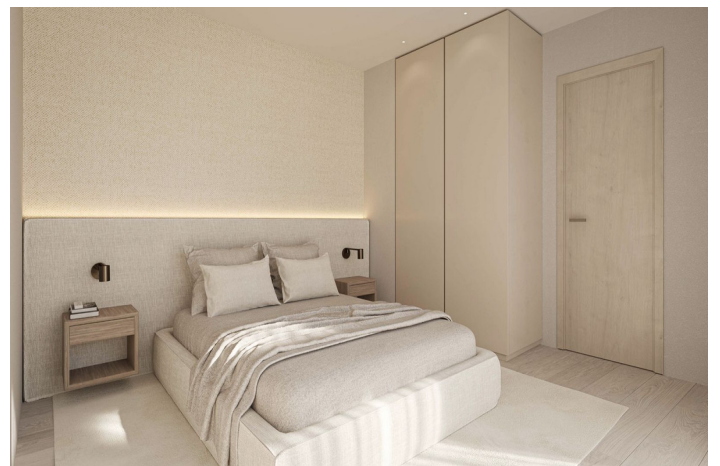




Middle Floor Apartment for sale in Estepona, Estepona

500,000 €

Reference: R4875205 Bedrooms: 1 Bathrooms: 1 Build Size: 41m² Terrace: 5m²





Costa del Sol, Estepona

Presenting an extraordinary new construction on the beachfront of Estepona, this south-facing masterpiece epitomizes luxury and elegance. Bathed in natural light throughout the day, this 1 bedroom 1 bathroom apartment offers sweeping, unobstructed views of the sparkling Mediterranean Sea, framed by Estepona's beautiful coastline. Every detail is crafted with the finest materials, from state-of-the-art finishes to premium flooring, creating an atmosphere of refined sophistication. Residents of this apartment will enjoy direct access to the beach and the comfort of cozy terraces, inviting them to savor the beauty of each sunrise over the horizon. Designed for those who seek both opulence and tranquility, this property is an exquisite blend of architectural excellence and natural beauty.

Beyond its beautiful beachfront setting, the building is perfectly situated in the heart of Estepona, a charming town known for its vibrant, family-friendly community and rich Andalusian culture. Estepona offers an ideal blend of modern conveniences and traditional charm, from stylish shopping areas and bustling markets to quaint cafes and inviting restaurants. It's a town that caters to all lifestyles, whether you're enjoying family outings at the many local parks, wandering through its enchanting Old Town with its colorful flower-lined streets, or browsing through its chic boutiques.

Estepona's reputation as a family-oriented community is enhanced by its excellent international schools, recreational facilities, and secure neighborhoods, making it an ideal location for those seeking both luxury and a welcoming atmosphere. This beachfront property brings the best of Estepona to your doorstep, blending unparalleled comfort with the natural beauty and cultural richness of this exquisite coastal town.

Contact us for more details and information.



Features:

Features

Lift
 Near Transport
 Private Terrace
 Satellite TV
 Ensuite Bathroom
 Double Glazing
 Fitted Wardrobes
 WiFi
 Fiber Optic
 Domotics
 Access for people with reduced mobility

Orientation

South
 South West

Climate Control

Air Conditioning
 Pre Installed A/C
 Cold A/C
 Hot A/C
 Central Heating

Views

Sea
 Beach
 Street

Setting

Commercial Area
 Beachside
 Close To Port
 Urbanisation
 Close To Sea
 Close To Shops
 Close To Town
 Close To Schools
 Town
 Close To Marina
 Beachfront
 Front Line Beach Complex
 Port
 Marina

Condition

Excellent
 New Construction

Furniture

Not Furnished

Kitchen

Fully Fitted

Security

24 Hour Security
 Alarm System
 Electric Blinds
 Entry Phone
 Safe

Parking

Street

Utilities

Electricity
 Drinkable Water
 Telephone
 Gas

Category

Holiday Homes
 Investment
 Beachfront
 Luxury
 Contemporary
 Off Plan
 With Planning Permission