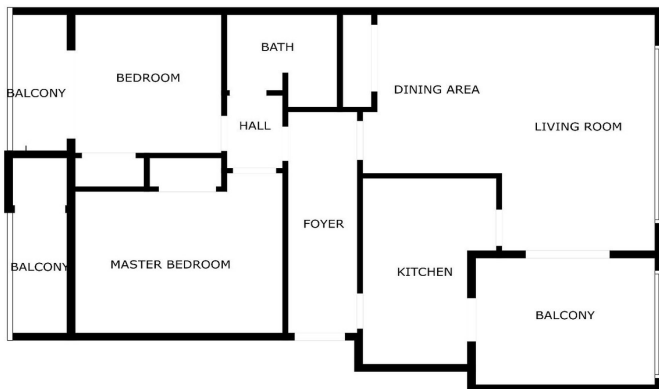




Penthouse for sale in Fuengirola, Fuengirola

479,000 €

Reference: R4776928 Bedrooms: 2 Bathrooms: 1 Build Size: 84m² Terrace: 7m²





Costa del Sol, Fuengirola

Discover this wonderful penthouse in an unbeatable location that will captivate you from the first moment. Perfect for those looking for comfort, functional design and spectacular views of the sea.

Upon entering, you will be greeted by a spacious and bright living room with large windows that frame stunning views of the sea. The living room integrates perfectly with the kitchen, creating a cozy and practical space. From here, you access a beautiful terrace, ideal for enjoying your morning coffee or a sunset drink while admiring the tones of twilight. Facing south, this terrace receives sun almost all day, becoming a natural extension of the living room, where you can relax and enjoy the views.

The penthouse has two bedrooms, a large bathroom with shower and a private sauna with its own shower room, located at the rear. The sauna offers impressive views of the mountain and the emblematic figure of "El Toro". Additionally, there is another terrace at the rear, facing west, perfect for watching the beautiful sunsets over the mountains.

This penthouse is sold fully furnished, with large built-in wardrobes in both bedrooms. It includes a parking space and is part of an urbanization that offers a community pool, as well as community gardens.

The location in the lower area of Torreblanca is ideal. It is close to the beach, shops, restaurants, daycare, public transportation, train station and has easy access to the highway. Despite being close to everything, the area is very quiet, which makes it a perfect place both to live and to invest. With an existing tourist license, this penthouse guarantees a constant rental throughout the year.

Don't miss the opportunity to live in this beautiful penthouse and enjoy a relaxed life on the sunny coast. Contact us today for more information and to schedule a showing!

Features:

Features

Covered Terrace
Lift
Near Transport
Private Terrace
Double Glazing
Fitted Wardrobes
Sauna

Views

Sea
Mountain

Pool

Communal

Garden

Communal

Orientation

South
South East

Setting

Beachside
Close To Port
Close To Shops
Close To Town
Close To Schools

Furniture

Part Furnished

Parking

Underground
Private

Climate Control

Air Conditioning

Condition

Good
Excellent

Kitchen

Fully Fitted

Category

Investment